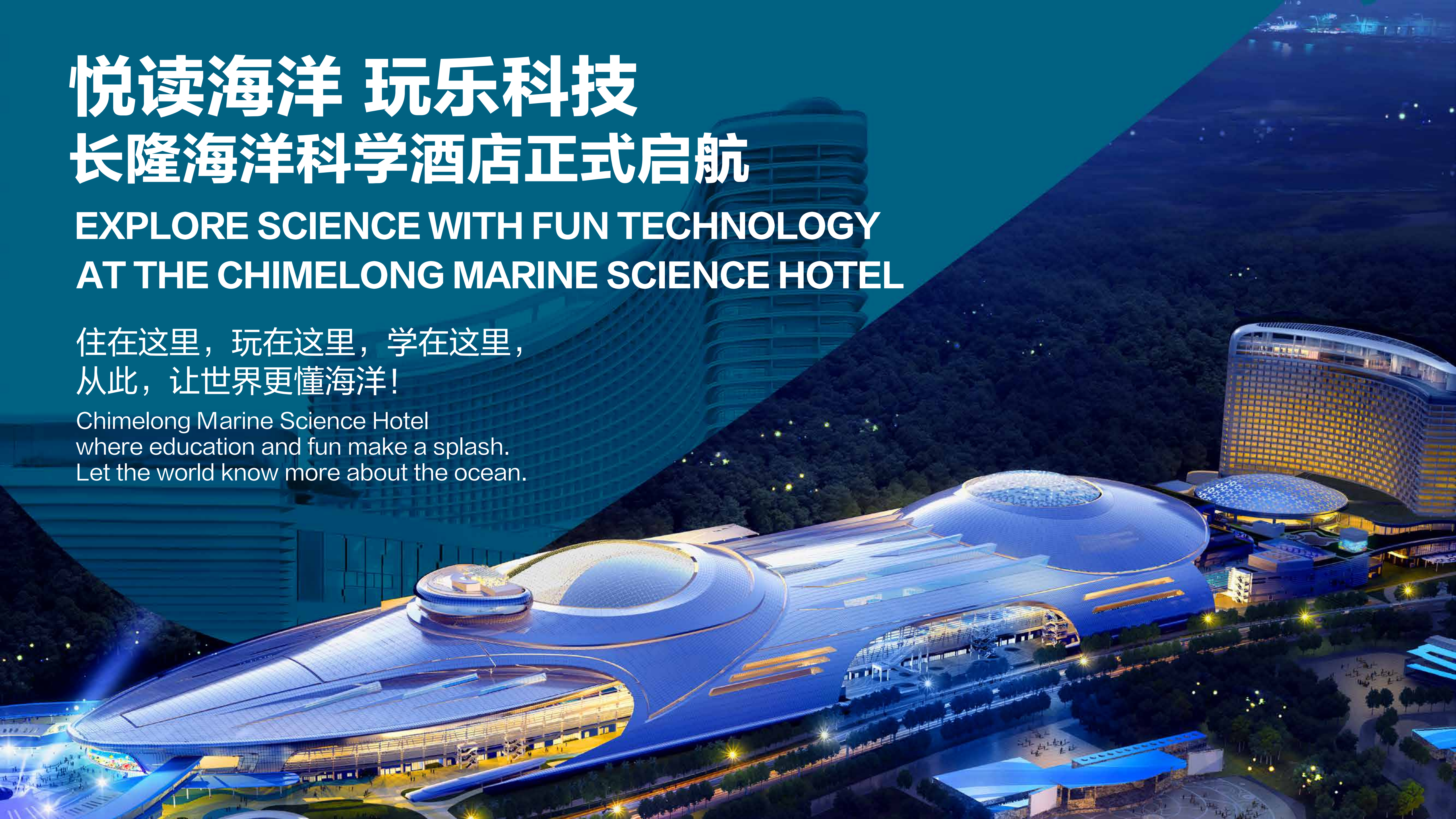


悦读海洋 玩乐科技 长隆海洋科学酒店正式启航

EXPLORE SCIENCE WITH FUN TECHNOLOGY
AT THE CHIMELONG MARINE SCIENCE HOTEL

住在这里，玩在这里，学在这里，
从此，让世界更懂海洋！

Chimelong Marine Science Hotel
where education and fun make a splash.
Let the world know more about the ocean.



欢迎加入珠海长隆海洋科学酒店“海洋科学号”。
在这里，您将化身作为一名探险家，驾驶着黄色潜水艇穿梭海底世界，
见识各种海洋生物，了解海洋生态，玩乐潮流科技。

酒店1,250间各具特色的主题客房及7间主题餐厅，
将无缝延伸您的假期乐趣，
为您开启一段奇妙独特的沉浸式海洋科学探寻之旅。

Welcome to SEA EXPLORER of the Chimelong Marine Science Hotel, Zhuhai,
where guests transform into explorers who navigate the yellow submarine
and travel through an undersea habitat while learning about ocean life
as well as important environmental issues.

The hotel features 1,250 spacious guest rooms and 7 themed restaurants.
You will have the opportunity to identify the mysterious deep-sea level.
Guests will experience educational activities
in a uniquely joyful and exciting way.







潜行探险

Underwater Exploration



深海隧道

Deep Sea Tunnel



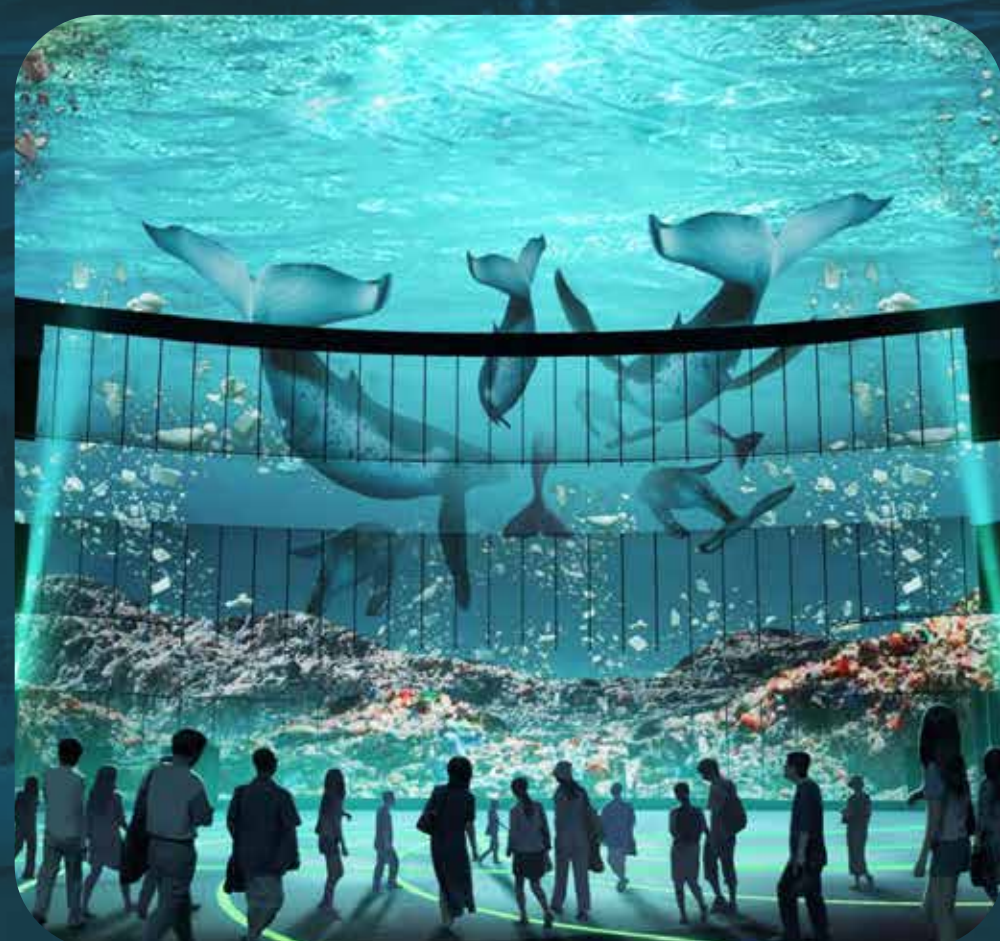
智慧科学蛋

Smart Science Egg



银沙拾海

Kids Beach



海神之光

Light Of Neptune



天际泳眺

Swim in The Clouds



海洋密码

Marine Puzzle



电动汽车充电桩

EV Charging Station



潜行探险

UNDERWATER EXPLORATION

潜水艇位于酒店大堂中心位置，
开启舱门，
即刻进入奇幻的海底世界，
透过LED互动屏幕及潜望镜，
打造动感特效模拟真实的深海景象，
让人身临其境，
五彩斑斓的海底之旅一触即发。

The submarine is located
at the centre of the hotel lobby,
take the submarine to experience
the wonders of the underwater world
through realistic simulation.
Use the periscope and interactive LED display
to explore the colourful underwater world.



深海隧道

DEEP SEA TUNNEL

酒店电梯应用现代科技，
犹如建在深海中的隧道，
随着客房楼层的变化，
带您进入由浅入深的海底世界，
观看不一样的深海奇观。

Enjoy the wonders of the oceanic creatures
at different levels of the ocean depths
when you ride the hotel elevators.

智慧科学蛋 SMART SCIENCE EGG

集趣味与科技为一体的智慧科学蛋，正在酒店大堂等着大家。
通过屏幕互动，探索丰富的海洋科学知识，
在快乐学习中感受海洋的奇妙之处。

Explore a wealth of marine science knowledge together, and experience
the wonders of marine science in-depth with the interactive display.



银沙拾海 KIDS BEACH

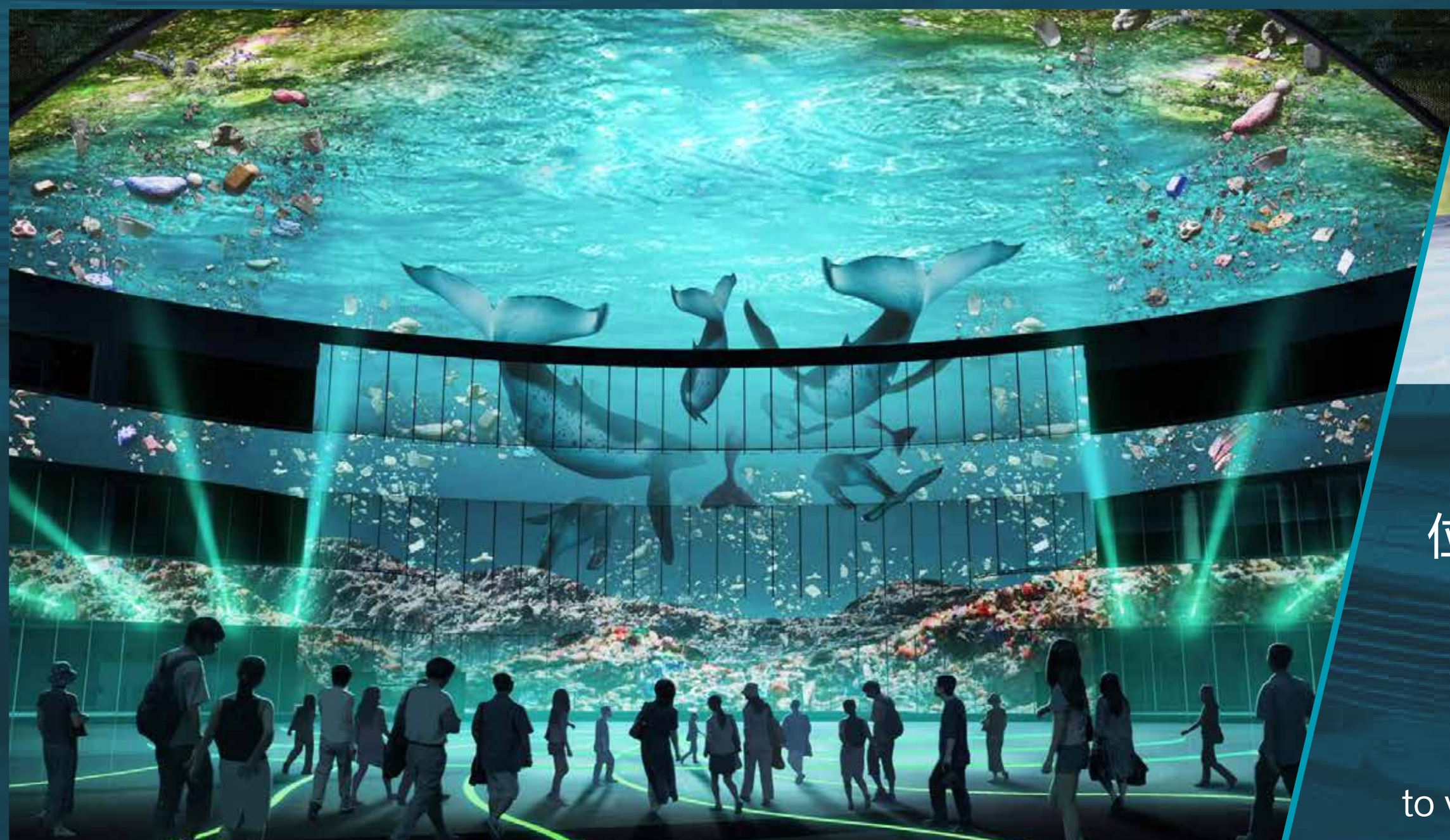
位于酒店大堂一侧，互动式全息投影，将银色沙滩、
辽阔大海及各式海洋生物等精彩呈现，让孩子感受奇妙的捕捉乐趣，
现实与科技完美融合，宛如亲临海中游玩。

Located on the side of the hotel lobby,
the interactive holographic projection creates a silver beach
where children can explore and follow the swimming sea creatures.
Perfect integration of reality and technology to deliver an impactful and fun experience.

海神之光 LIGHT OF NEPTUNE

位于海洋科学乐园与酒店的汇集中心，通过巨型圆弧的LED天幕，结合科技与灯光，匠心呈现一场充满梦幻色彩的深海奇幻秀，给人带来震撼心灵的视觉盛宴。

The Neptune Arcade is a showcase of technology with its LED light show that brings marine animals to life. The Light of Neptune is a stunning visuals performance for all ages to enjoy.



天际泳眺 SWIM IN THE CLOUDS

位于酒店28楼，270度环形无边际恒温泳池，让您一边悠闲戏水，一边拥抱海上黄昏、烟花汇演、鲸鲨投影等瑰丽美景，享受一次放松身心、精彩难忘的天际泳眺。

Located on the 28th floor, the 270-degree infinity heated pool is the perfect spot to view a sunset, take in a firework performance and view the impressive whale shark projections indulge yourself with an unforgettable "swim in the clouds" experience and relax with a glass of champagne while enjoying a firework display.



海洋密码 MARINE PUZZLE

酒店潜水艇船长悄悄地将一份惊喜的欢迎礼物放在客房的保险箱里，船长邀请您开动脑筋，扫描挂画上的二维码，智慧答题，即可获得“海洋密码”，开启保险箱获取礼物。

The captain of the hotel submarine quietly leaves a surprise welcome gift in the guest room safe. Challenge yourself to answer the questions and get the marine password by scanning the QR code on the picture. Then open the safe to claim your welcome gift.



电动汽车充电桩 EV CHARGING STATION

酒店设有38个快速充电桩（含3个电动大巴充电桩），40个普通充电桩，为新能源车主提供更好的续航，为每一次旅行增添源源动力。

The hotel has 38 fast charging piles (including 3 electric bus charging piles) and 40 ordinary charging piles. Letting you travel fully charged.



酒店客房 ROOM AND SUITE

类型

ROOM TYPE

面积

SIZE

印度洋房

Indian Ocean Room

40 m²

北冰洋房

Arctic Ocean Room

40 m²

太平洋度假房

Pacific Ocean Vacation Room

40 m²

大西洋家庭房

Atlantic Ocean Family Room

70 m²

北极熊套房

Polar Bear Suite

75 m²

船长套房

Captain Suite

120 m²

印度洋房以『缤纷海洋』为主题，
倡导人们关注及为海洋环境整治出一份力，
保护海洋环境。

With the theme of "Colourful Ocean",
the guestrooms aim to remind people of the importance
of protecting the marine environment
and the contribution towards such efforts.

印度洋房

INDIAN OCEAN ROOM

面积 Size : 40m²

景观：山景
View : Hill View



北冰洋房

ARCTIC OCEAN ROOM

北冰洋房以『极地世界』为主题，
呼吁人们关注全球变暖，
保护海洋生态。

With the theme of "Polar World",
the guestrooms aim to inspire people
to pay attention to global warming
and the preservation of the marine ecosystem.



面积 Size : 40m²

景观：山景 / 海景

View : Hill View or Sea View



太平洋度假房以『生命之旅』为主题，
唤醒人们对海洋的环保意识，
倡导人们积极维护海洋生态平衡。

With the theme of "Journey of Life"
the Pacific Ocean Vacation Room bring awareness
to environmental protection and the preservation
of ecological balance

太平洋度假房

PACIFIC OCEAN VACATION ROOM

面积 Size : 40m²

景观：山景 / 海景

View : Hill View or Sea View

大西洋家庭房以「海底畅游」为主题，
呈现海底与海洋生物共游的美好画面，
倡导人鱼和谐相处，
保护海洋生物多样性。

With the theme of "Underwater Adventure"
the Atlantic Ocean Family Suite inspire adults and children
alike to learn how to preserve marine biodiversity.

大西洋家庭房

ATLANTIC OCEAN FAMILY ROOM

面积 Size : 70m²

景观：山景 / 海景

View : Hill View or Sea View



北极熊套房以『冰川生命』为主题，
呼吁宾客关注全球变暖对北极地区生命
带来的重大影响，倡导低碳生活，
共同守护冰川自然环境。

With the theme of "Glacier Life", the Polar Bear Suite
encourage guests to pay attention to the significant impact
of global warming on life in the Arctic and advocate
for a low-carbon lifestyle.

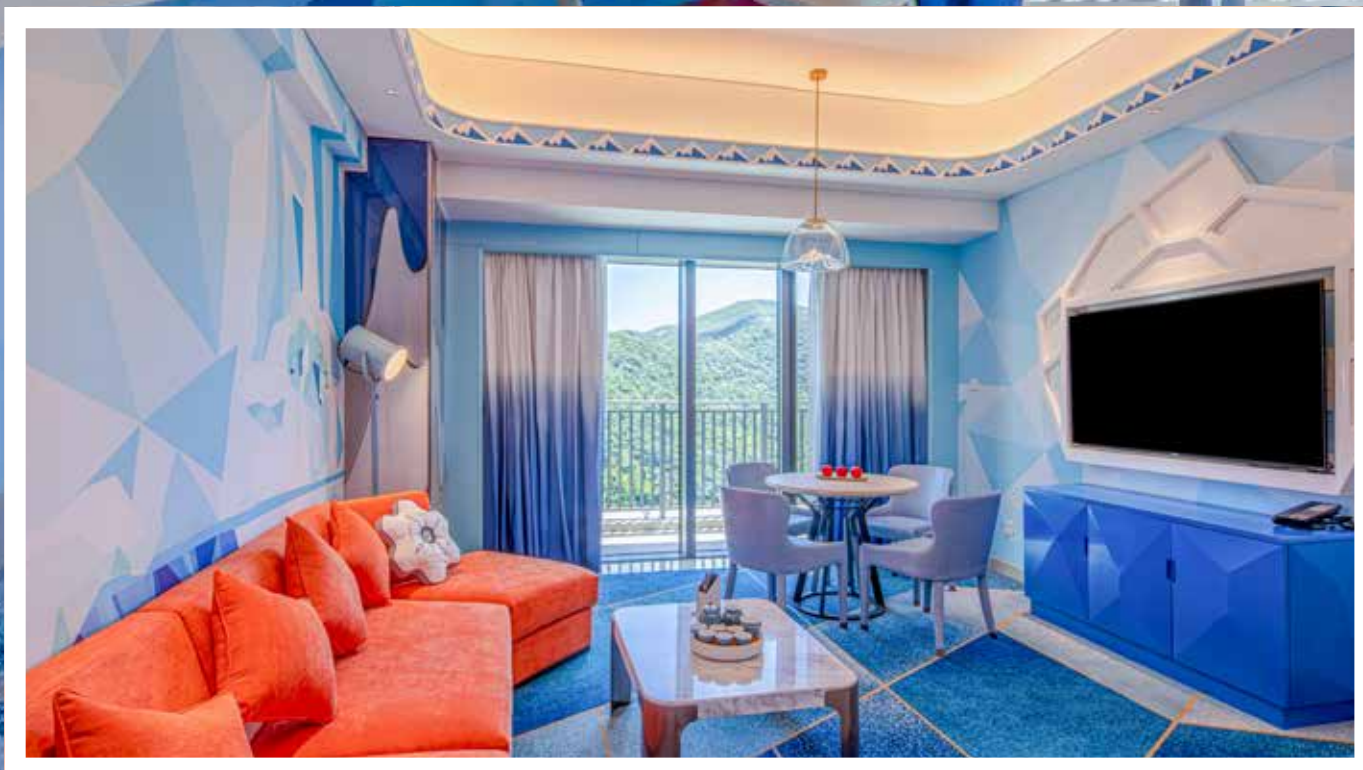
北极熊套房

POLAR BEAR SUITE

面积 Size : 75m²

景观：山景 / 海景

View : Hill View or Sea View



船长套房以『伟大航海』为主题，
诠释航海对人类发展的重大意义，
鼓励人们积极探索，
倡导文明与科技和谐共进。

With the theme of "Great Navigation"
the captain suite interprets the close connection between
human development and the sea, it advocates for
the protection of the sustainable development of the seas.

船长套房 CAPTAIN SUITE

面积 Size : 120m²

景观：山景 / 海景
View : Hill View or Sea View



尊享度假礼遇及管家服务(太平洋度假房及以上房型)

VACATION BENEFITS AND BUTLER SERVICES FOR THE VIP GUESTS
STAYING IN THE PACIFIC OCEAN VACATION ROOM AND SUITE AT THE FULL PRICE

A 度假礼遇 Vacation Benefits

尊享贵宾接待廊独立快捷的入住和退房

Personalized express check-in and out service

尊享水手自助餐厅的精美早餐 (07:00 am – 10:30 am)

Daily Buffet Breakfast at Sailor Buffet Restaurant
from 07:00 am to 10:30 am

尊享贵宾接待廊软饮及小食服务 (11:00 am – 10:30 pm)

Complimentary soft drinks and snacks daily
from 11:00 am to 10:30 pm

尊享贵宾接待廊商务区电脑及舒适按摩椅

Complimentary usage of computers and massage chairs

尊享贵宾接待廊会议室每天1小时 (敬请提前预订)

Complimentary usage of meeting room per hour per day
(advance reservation is required)

欢迎水果

Welcome Fruit

B 管家服务 Butler Services

前期沟通

Preliminary
Communication Service



入住接待

Check-in
Service



行程协助

Travel
Arrangement



退房接待

Check-out
Service



再次预订协助

Advance Reservation
Service

酒店内其他配套设施

ROOM SUPPLIES

客房儿童物品供应清单

KIDS AMENITIES

- 婴儿浴盆 Baby Bath
- 水龙头延伸器 Faucet Extender
- 床上护栏 Baby Guardrail Bar
- 奶瓶消毒器 Baby Bottle Sterilizer
- 婴儿床 Baby Cot
- 儿童浴帽 Baby Shower Cap

枕头借用服务

PILLOW LENDING SERVICE

- 海绵枕 Shredded Memory Pillow
- 薰衣草枕 Lavender Pillow
- 木棉枕 Kapok Pillow
- 护颈枕 Cervical Support Pillow
- 荞麦枕 Buckwheat Pillow
- 决明子枕 Cassia Seed Pillow
- 记忆枕 Memory Pillow
- 竹炭枕 Bamboo Charcoal Pillow
- 玉石枕 Jade Pillow

其他设施与服务

OTHER FACILITIES

- 轮椅 Wheelchair
- 婴儿车 Baby Carriage
- 医务室 Clinic
- 健身房 Gym



酒店餐饮 DINING AND DRINKING

餐厅 OUTLET	楼层 FLOOR
水手自助餐厅 Sailor Buffet Restaurant	2
大堂吧 Lobby Lounge	2
甲板汇 Dining Deck	3
食集 Food Street	1
筷食荟 Food Court	1
无边际泳池餐厅 The 28 th Restaurant	28
珊瑚餐厅 Coral Restaurant	1
海神广场 Neptune Arcade	1



水手自助餐厅 Sailor Buffet Restaurant

位于酒店2楼，以水手为主题，一站式提供东南亚风气等国际特色美食，热情好客的餐厅水手们带您第一视角体验航海美食生活。

Located on the 2nd floor, experience the life of a sailor from their perspective at Sailor Buffet Restaurant, you will be served by an enthusiastic crew dressed up as sailors. Get a taste of the exotic flavours of Southeast Asian and international cuisine.



水手自助餐厅

📍 位置 Location : L2

🍴 餐位 Capacity : 500

🕒 营业时间 Opening Hours : 早餐 Breakfast 07:00 - 10:30

午餐 Lunch 11:30 - 14:00

晚餐 Dinner 17:30 - 21:30



大堂吧 Lobby Lounge

位于酒店大堂一侧，提供精致的下午茶、风味茶饮、各式咖啡以及各种软饮、酒水等，为您的蓝色海洋假期创造悠闲写意的美丽时刻。

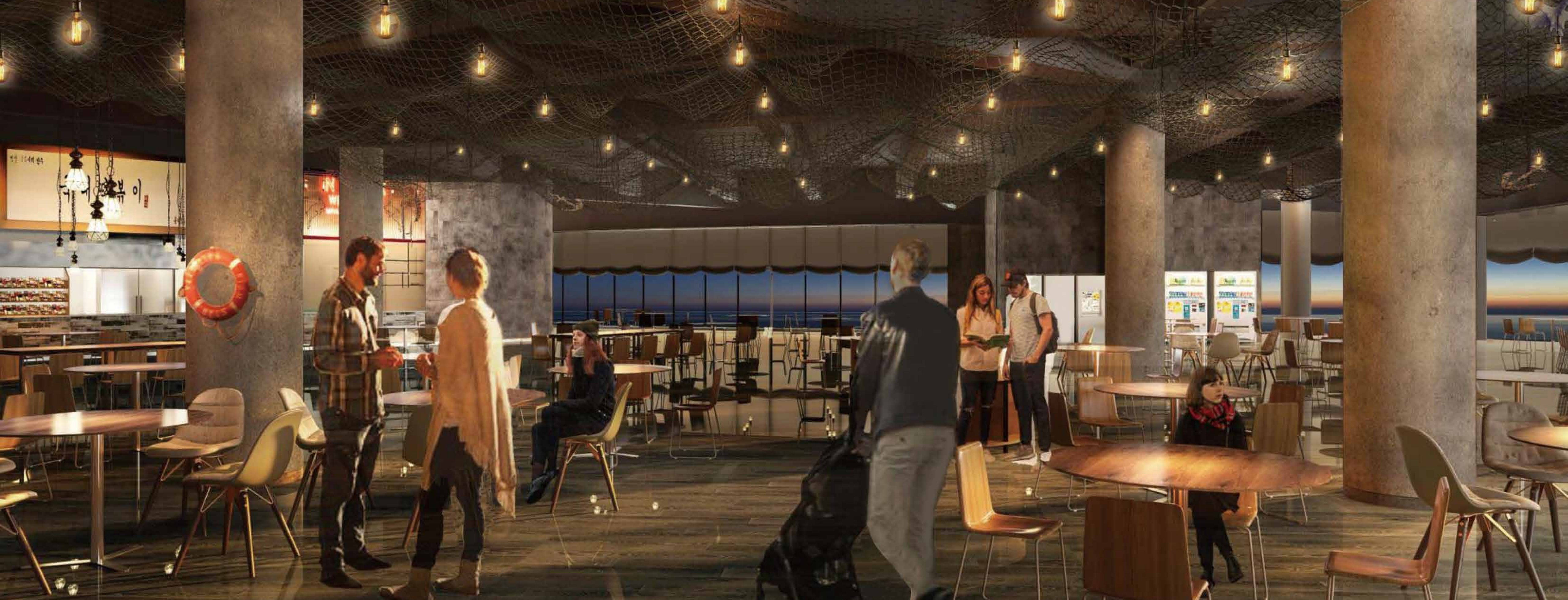
Located on the side of hotel lobby, Lobby Lounge serves delicate desserts, flavour tea and coffee, special soft drinks and other beverages. The sweet moment puts you in a good mood for your holiday.

大堂吧 Lobby Lounge

📍 位置 Location : L2

🍽️ 餐位 Capacity : 100

🕒 营业时间 Opening Hours : 每天 Daily 11:00 - 23:00



甲板汇 Dining Deck

位于酒店3楼，船舰基地工业风的甲板汇，在夜晚用餐的同时观赏烟火汇演，别致有趣的舷舱环境，为您提供了一个具有甲板风情的航海美食之旅。

Located on the 3rd floor, decorated in the style of an industrial shipyard, the outdoor dining area allows you to watch firework performances while enjoying your dinner. If you are looking for something unique and fun, Dining Deck will be the right place for you.



甲板汇

📍 位置 Location : L3

🍴 餐位 Capacity : 600

🕒 营业时间 Opening Hours : 早餐 Breakfast 07:00 - 11:00

午餐 Lunch 11:00 - 15:00

晚餐 Dinner 17:30 - 21:00



食集 Food Street

位于酒店1楼，美食广场聚集16家风格迥异的网红小吃店，满足食客“逛吃”模式需求精选世界各地特色小食，给舌尖来一场国际小食味蕾体验。

Located on the 1st floor, Food Street gathers 16 popular snacks stalls to satisfy your quick bite cravings. Food Street allows you to binge on popular snacks. Embark on an international snack tour with a selection of offers from around the world.



📍 位置 Location : L1 | 🍴 餐位 Capacity : 室内 Indoor 270 & 室外 Outdoor 1400
🕒 营业时间 Opening Hours : 每天 Daily 11:30 - 23:00



筷食荟 Food Court

位于酒店1楼，港陆特色美食风味、魔幻闪亮的霓虹灯招牌、充满街市气息的美食荟萃，带您重回巅峰时期佳肴遍地的老香港。

Have a taste of Hong Kong and Mainland specialities, while being surrounded by shiny neon signs. Located on the 1st floor, this market-filled gastronomic gathering replicates the hustle and bustle of the famous Mongkok district, soak in the atmosphere of neon-bathed streets as you enjoy gourmet food.

筷食荟
Food Court

📍 位置 Location : L1 | 🍽️ 餐位 Capacity : 300
🕒 营业时间 Opening Hours : 每天 Daily 11:00 - 20:00



无边际泳池餐厅 The 28th Restaurant

位于酒店28楼，美食与休闲完美融合的好去处，半弧形落地玻璃，为您提供开阔的视野，一边享受美食，一边欣赏窗外的青山绿水，纵享写意奢华。

Located on the 28th floor, this is where good food and good views are in harmony. The semi-curved floor-to-ceiling windows provide you with a broad view of a serene environment. You can indulge yourself with the finest food while admiring a gorgeous view of nature.

THE 28th
RESTAURANT
无边际泳池餐厅

📍 位置 Location : L28

🍴 餐位 Capacity : 230

🕒 营业时间 Opening Hours : 每天 Daily 07:00 - 21:30



珊瑚餐厅 Coral Restaurant

位于酒店一楼，独具特色的海洋生态餐厅提供多元化美食，富有童梦与奇幻，让您宛如在海底中就餐，近距离接触活体珊瑚和色彩缤纷的鱼群。

Located on the 1st floor, enjoy an enchanting experience as you savour on the fine food. Bask in wonder and watch colourful corals and fishes swimming peacefully while you dine.

珊瑚餐厅
Coral Restaurant

📍 位置 Location : L1

👤 餐位 Capacity : 500

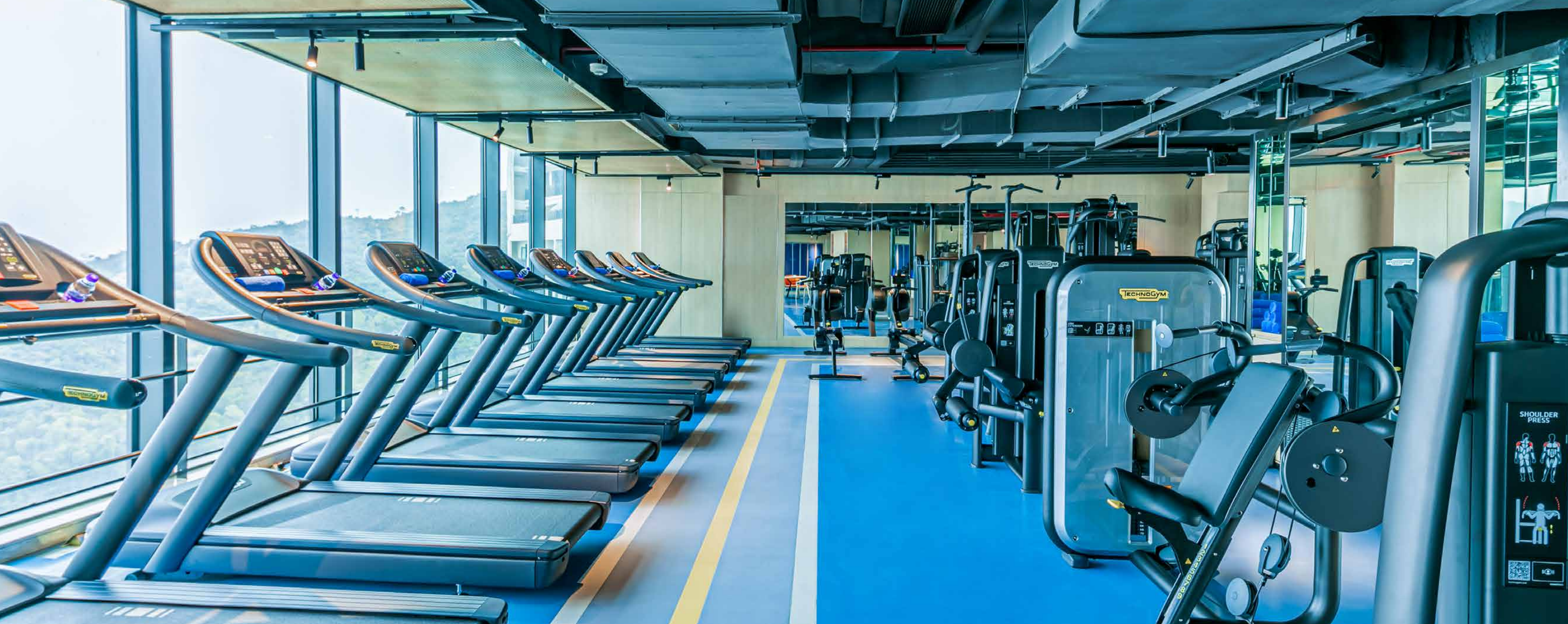
🕒 营业时间 Opening Hours : 每天 Daily 11:00 - 21:00



海神广场 Neptune Piazza	楼层高度 Ceiling Height (M)	直径 Diameter (M)	面积 Total Area (SQM)	宴会式 Banquet (No. of Guests)	课堂式 Classroom (No. of Guests)	酒会式 Cocktail (No. of Guests)	剧院式 Theatre (No. of Guests)
	28	80	5,000	1,200	1,500	2,000	3,500

海神广场位于乐园与酒店的汇集中心，面积约5,000平方米，层高28米，广场配备756平方米大型拼接LED屏幕大型灯光秀及演出舞台系统，最大容量为宴会形式1,200人，会议形式3,500人。

Neptune Arcade is 5,000 square meters in area, 28 meters high located in the intersection between the hotel and the park. A full set of equipment system including LED screen light and audio can satisfy large light show and performance.



云端健步 Run Among the Clouds

📍 位置 Location : L27

🕒 营业时间 Opening Hours : 每天 Daily 07:00 - 22:00

位于酒店27楼，拥有先进齐全的健身设备，开阔的落地玻璃，将度假区美景一览无遗，集健身与休闲为一体，带您体验一场别致的云端健步。

Located on the 27th floor, work up a sweat with state-of-the-art gym facilities and spectacular unobstructed view of the mountains and sea.



海洋补给站 Ocean Boutique Store

📍 位置 Location : L2

🕒 营业时间 Opening Hours : 每天 Daily 09:00 - 21:30

位于酒店大堂一侧，主营有趣、好玩、具备科普意义的纪念品，还有衣服、帽子、玩偶及各类独特造型的文具等精品；作为海洋馈赠的礼物，承载着您与家人、朋友在这次海底之旅的美好回忆。

Located on the side of the hotel lobby, the Ocean Boutique Store offers exclusive merchandise to help you remember your adventure. Choose from a wide selection of apparels, hats, soft toys, stationeries and other souvenirs that are interesting, fun and eco-friendly. These gifts from the ocean are perfect to brighten anyone's day, commemorate your underwater adventures with your family and friends.

交通 TRAFFIC

得天独厚的地理位置，与香港、澳门一水之隔；
The hotel occupies a prime location situated in Hengqin New District, which is connected with Macau, close to Hong Kong and Guangzhou.

1小时城际轻轨直达广州；
1-hour intercity light railway to Guangzhou.

70分钟水上航线直达香港；
70 minutes to Hong Kong by ferry.

90分钟途经港珠澳大桥直达香港；
90 minutes to Hong Kong through Hong Kong - Zhuhai - Macau Bridge.

2.5小时车程内可达广州、深圳机场；
Within 2.5 hours drive to Guangzhou and Shenzhen airport.

亚洲各大城市与港澳、广州也仅5小时内的机程。
Within 5 hours flight journey from Guangzhou, Macau and Hong Kong International Airport to the major Asian cities.



自驾车入园指引

TRAFFIC GUIDE FOR SELF-DRIVING

经横琴大桥进入

VIA HENGQIN BRIDGE

横琴大桥 → 环岛东路 → 富祥湾路 → 海洋科学酒店

Hengqin Bridge → Huan Dao East Road → Fuxiang Bay Road → Marine Science Hotel

经横琴二桥进入

VIA HENGQIN SECOND BRIDGE

横琴二桥 → 环岛西路 → 长隆大道 → 长隆深井隧道 → 富祥湾路 → 海洋科学酒店

Hengqin Second Bridge → Huan Dao West Road → Chimelong Road → Shenjing Tunnel → Fuxiang Bay Road → Marine Science Hotel



穿梭巴士线路

SHUTTLE BUS SCHEDULE

海洋科学酒店 ↔ 海洋王国

Marine Science Hotel ↔ Ocean Kingdom

路线 Route	海洋科学酒店至海洋王国 Marine Science Hotel to Ocean Kingdom	海洋王国至海洋科学酒店 Ocean Kingdom to Marine Science Hotel
穿梭时间 Time	9:00-21:00	9:30-21:30

海洋科学酒店 ↔ 马戏酒店

Marine Science Hotel ↔ Circus Hotel

路线 Route	海洋科学酒店至马戏酒店 Marine Science Hotel to Circus Hotel	马戏酒店至海洋科学酒店 Circus Hotel to Marine Science Hotel
穿梭时间 Time	18:30、18:50 19:00、19:10	21:10、21:15 21:20、21:25



酒店客用停车场

PARKING LOTS

车位位置
Location

数量
Quantity

地下车库
Underground

A区：240个小车位，B区：282个小车位
For Vehicle: 522

团体大堂外
Outside of Group Lobby

小车位：38个，穿梭巴士位：5个
For Vehicle: 38, for Shuttle Bus: 5

酒店门厅外
Outside of Main Entrance

小车位：11个
For Vehicle: 11

室外停车场
Outdoor Parking Lot

小车位：85个（其中75个带充电桩），大巴车位：10个（其中3个带充电桩）
For Vehicle: 85（Including 75 Charging Stations）
For Coach: 10（Including 3 Charging Stations）

合计小车位：656个，大巴车位：15个
Total: Vehicle: 656，Coach: 15



长隆海洋科学酒店

MARINE SCIENCE HOTEL

CHIMELONG

中国，广东省，珠海市，横琴新区，富祥湾路1号 邮编: 519031 电话 Tel +86 756 299 8666 传真 Fax +86 756 299 8608
No.1, Fuxiang Bay Road, Hengqin New District, Zhuhai City, Guangdong 519031, People's Republic of China
www.chimelong.com